

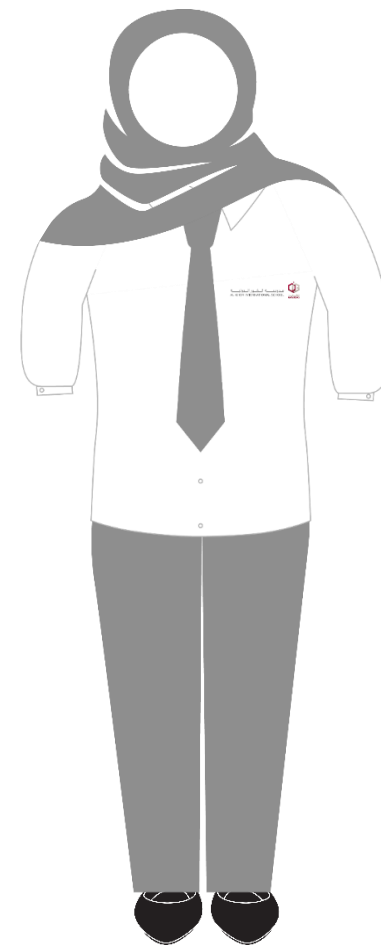
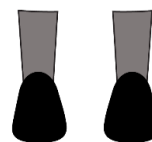
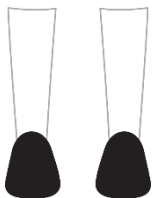
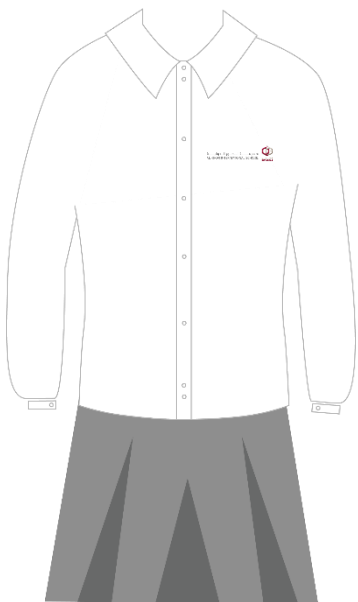
School Uniform Guide

British Curriculum Primary and Secondary

Options for Girls

Foundation Stage - Year 11

Any combination of the options below are permitted



Option 1

- Standard white blouse, square cut hemline, long or elbow length sleeve with collar, logo stitched directly on right side upper breast pocket
- May be worn without tucking into below knee length grey skirt
- Formal grey skirt below the knee for female students only
- Grey, black or white tights or leggings
- Formal closed toe, black shoes.

Option 2

- Standard white blouse, square cut hemline, long or elbow length sleeve with collar, logo stitched directly on right side upper breast pocket
- May be worn without tucking into grey, below knee length skirt
- Optional plain grey tie (House stripe not required)
- Plain black jumper or zip cardigan with new logo
- Grey, black or white tights or leggings
- Formal closed toe, black shoes.

Option 3

- Standard white blouse, long sleeve or elbow length sleeve with collar, worn underneath pinafore dress
- Optional plain grey tie (House stripe not required)
- Formal grey pinafore dress below the knee. Logo stitched on the upper right hand side of the breast panel
- Grey, black or white tights or leggings
- Formal closed toe, black shoes.

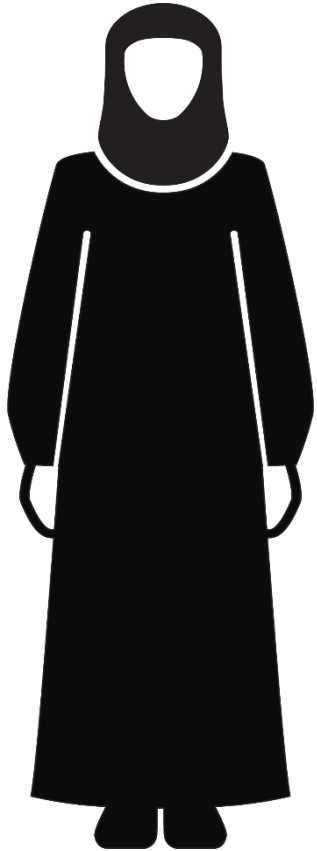
Option 4

- Optional hijab in plain grey, white, or black
- Standard white blouse, square cut hemline, long or elbow length sleeve with collar, logo stitched directly on right side upper breast pocket
- May be worn without tucking into formal grey trousers
- Optional plain grey tie (House stripe not required)
- Grey, black or white socks
- Formal closed toe, black shoes.

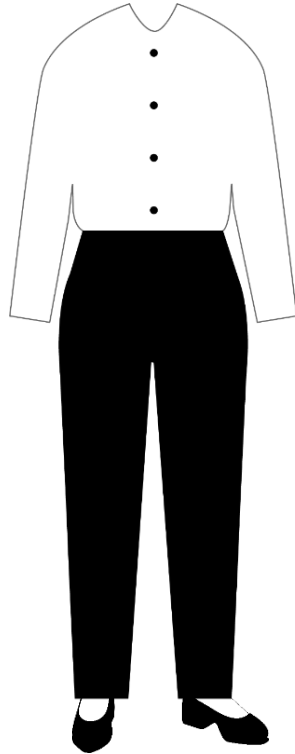
Options for Post 16 Girls

Years 12-13

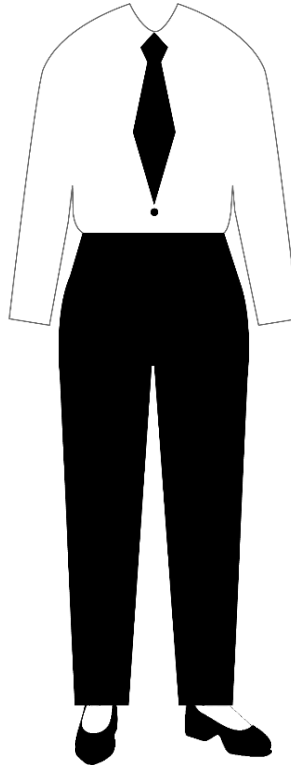
Any combination of the options below are permitted



- Option 1**
- Closed, plain black abaya for Qatar nationals
 - Formal closed toe, black shoes or formal black sandals.



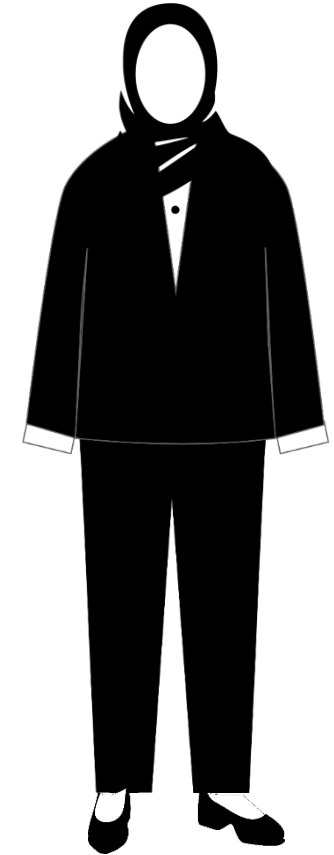
- Option 2**
- White blouse, long or elbow length sleeve
 - Blouse may be tucked in, or worn without tucking in
 - Formal black trousers
 - Formal, closed toe shoes.



- Option 3**
- White blouse, long or elbow length sleeve; blouse may be tucked in, or worn without tucking in
 - Optional tie
 - Formal black trousers
 - Formal, closed toe shoes.



- Option 4**
- White blouse, long or elbow length sleeve; blouse may be tucked in, or worn without tucking in
 - Plain black jacket, sweater or cardigan
 - Below knee length skirt
 - Formal, closed toe shoes.

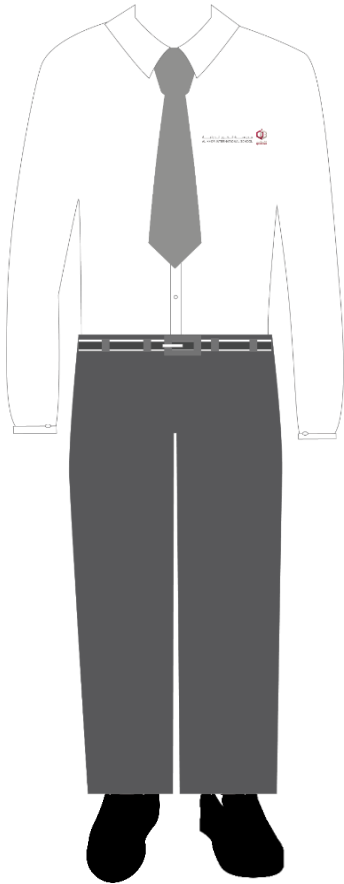


- Option 5**
- Plain hijab in any colour
 - White blouse, long or elbow length sleeve; blouse may be tucked in, or worn without tucking in
 - Formal black trousers
 - Plain black jacket, sweater or cardigan
 - Formal, closed toe shoes.

Options for Boys

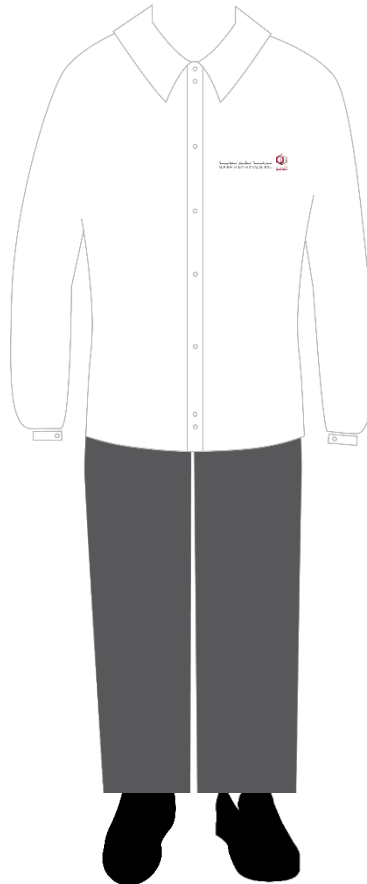
Foundation Stage - Secondary Year 11

Any combination of the options below are permitted



Option 1

- Optional plain grey tie (House stripe not required)
- Standard white, long sleeve shirt with collar
- Formal grey trousers
- Formal, closed toe black shoes with white, grey or black socks.



Option 2

- Standard white, long or short sleeve shirt with collar
- Formal grey trousers
- Formal, closed toe black shoes with white, grey or black socks.



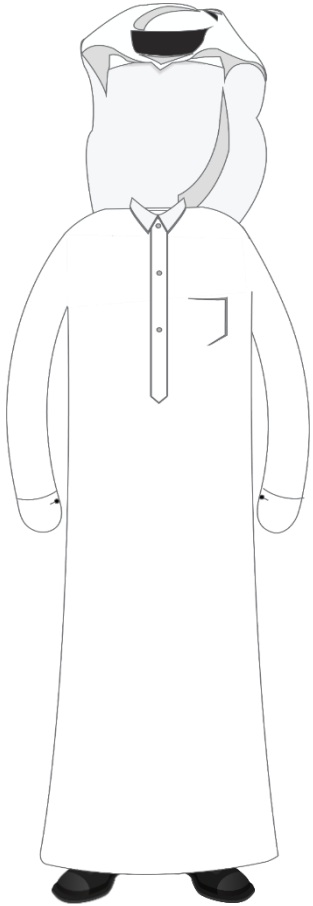
Option 3

- Standard white, long or short sleeve shirt with collar
- Optional plain grey tie (House stripe not required)
- Plain black jumper or zip cardigan with new logo
- Formal grey trousers
- Formal, closed toe black shoes with white, grey or black socks.

Options for Post 16 Boys

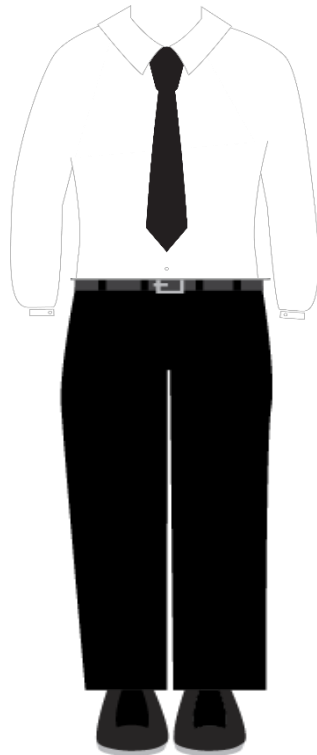
Years 12-13

Any combination of the options below are permitted



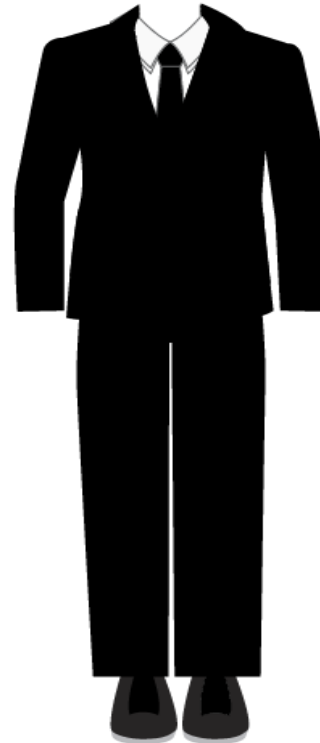
Option 1

- National dress for Qatar nationals
- Formal closed toe, black shoes or formal black sandals.



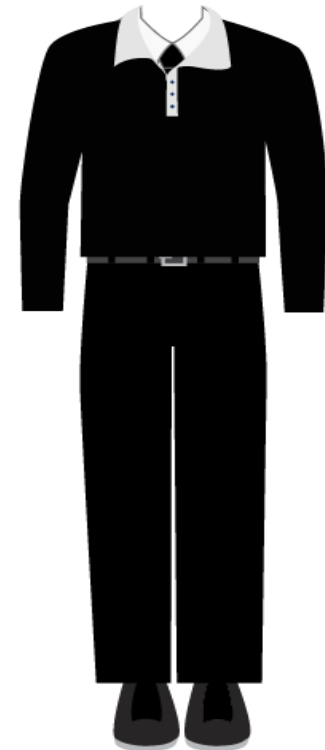
Option 2

- Conservative tie
- White formal shirt
- Black formal trousers
- Formal closed toe, black shoes



Option 3

- Conservative tie
- White formal shirt
- Black formal trousers
- Formal closed toe, black shoes
- Optional plain black jacket or blazer.



Option 4

- Conservative tie
- White formal shirt
- Black formal trousers
- Formal closed toe, black shoes
- Optional plain black knitwear e.g., pull over or sweater.

Physical Education Lessons

Foundation Stage - Year 13

Any combination of the options below are permitted



- Standard t-shirt in house colour, no school logo required
- Long sleeve or short sleeve
- Plain white t-shirt, no logo
- Plain black or white long sleeve t-shirt may be worn underneath.



Navy or black knee length shorts or track pants.



Grey, white, or black socks and sports trainers.

Additional Items

Foundation Stage - Year 11



- Plain grey or khaki caps are compulsory for all BC Primary students to be worn during break times and outdoor PE lessons.
- Caps bearing brand logos or allegiance to clubs are not permitted.



A hijab may be worn by girls in white, grey, or black. Post 16 students may wear a plain hijab in any colour.



During winter months, students may opt to wear a plain black zip cardigan, or jumper over their shirt or blouse. This must bear the new school logo.

On health and safety grounds, students are not permitted to wear jewellery to school with the exception for girls only, of one plain stud in each ear, and a watch. Dangling earrings or rings with stones that protrude are not permitted. Other piercings such as nose or eyebrow studs are strictly forbidden. Boys are permitted to wear a watch.

Extreme hairstyles that could serve as a distraction to other students or, detract from the smart appearance of the uniform are not allowed. The definition of what is extreme will change with fashion but includes non-natural coloured hair, or, hair with patterns cut into it.

Makeup is not permitted for students in Year 11/ Grade 10 and below. For Post 16 female students, light makeup may be worn.

Where to Buy

Parents are welcome to purchase uniform from any retailer, or tailor.



Ascot Uniforms

All items will be available for purchase from Al Waha Club each weekend and through August.

5583 6548

5047 1610