

School Uniform Guide

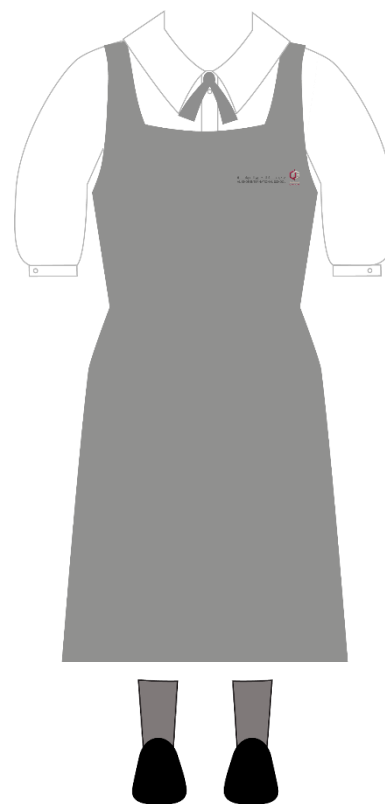
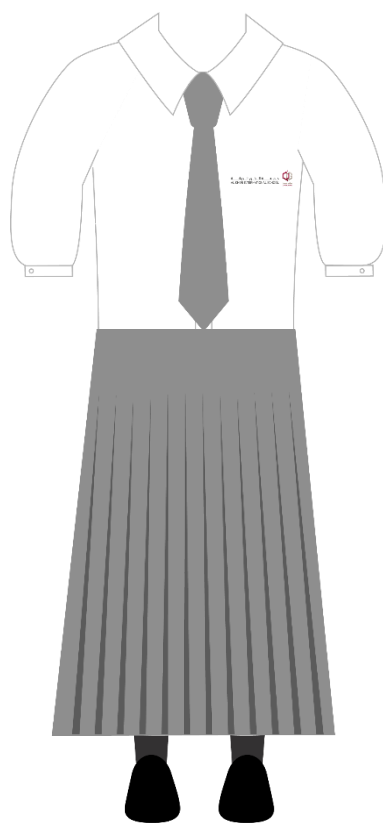
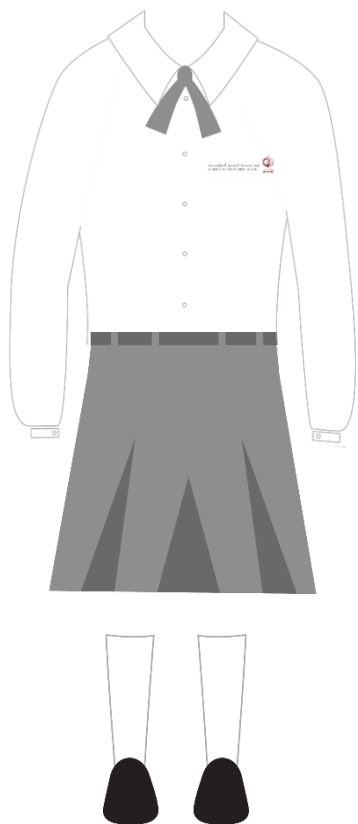
CBSE Junior and Senior



Options for Girls

Kindergarten 2 - Grade 10

Any combination of the options below are permitted



Option 1

- White blouse with collar, long or elbow length sleeve, logo stitched directly on right side upper breast pocket
- Blouse tucked in
- Plain grey criss cross tie (mandatory from Grade 3)
- Formal grey skort below the knee
- Grey, black or white socks
- Formal closed toe, black shoes.

Option 2

- White blouse with collar, long or elbow length sleeve, logo stitched directly on right side upper breast pocket
- Blouse tucked in
- Plain grey regular tie (mandatory from Grade 3)
- Formal grey skirt below the knee
- Grey, black or white socks
- Formal closed toe, black shoes.

Option 3

- White blouse with collar, long or elbow length sleeve; worn under pinafore dress
- Plain grey, criss cross tie (mandatory from Grade 3)
- Formal grey pinafore dress below the knee. Logo stitched on the upper right hand side of the breast panel
- Black, grey, white leggings or, tights
- Formal closed toe, black shoes.

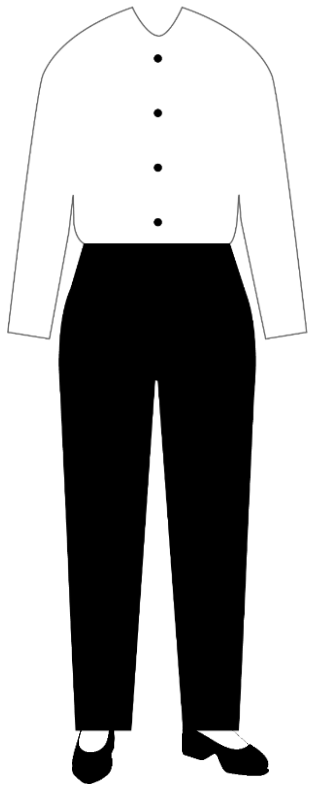
Option 4

- Optional hijab in plain grey, white, or black
- White blouse with collar, long or elbow length sleeve
- Blouse tucked in
- Plain grey regular tie (mandatory from Grade 3)
- Plain black jumper or zip cardigan with logo stitched to right breast panel
- Grey trousers
- Grey, black or white socks
- Formal closed toe, black shoes.

Options for Post 16 Girls

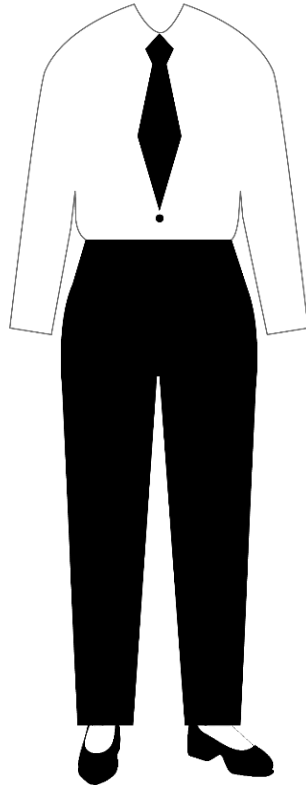
Grades 11-12

Any combination of the options below are permitted



Option 1

- White blouse, long or elbow length sleeve
- Formal black trousers
- Formal closed toe, black shoes.



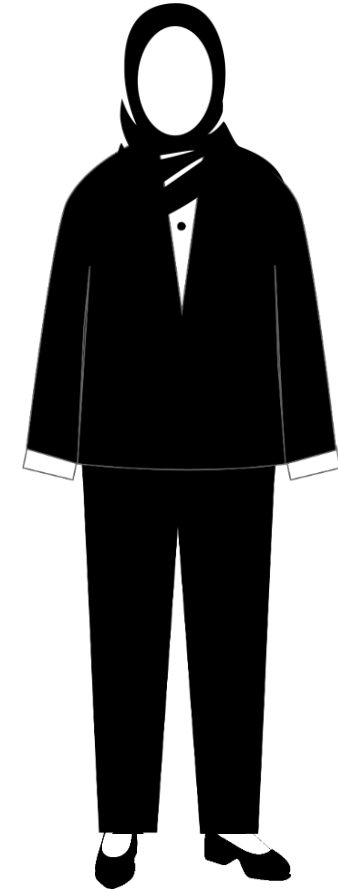
Option 2

- White blouse, long or elbow length sleeve
- Optional tie
- Formal black trousers
- Formal closed toe, black shoes.



Option 3

- White blouse, long or elbow length sleeve
- Plain black jacket, zip up cardigan or sweater
- Skirt below the knee
- Formal closed toe, black shoes.



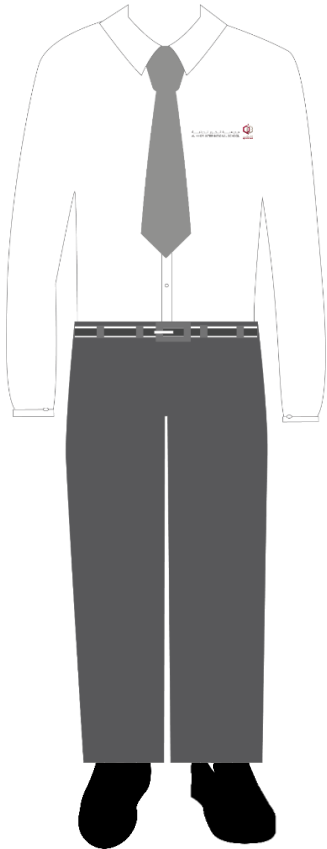
Option 4

- Plain hijab in any colour
- White blouse, long or elbow length sleeve
- Plain black jacket, zip up cardigan or sweater
- Formal black trousers
- Formal closed toe, black shoes.

Options for Boys

Kindergarten 2 -Grade 10

Any combination of the options below are permitted



Option 1

- Regular tie, plain grey (mandatory from Grade 3)
- Standard white long sleeve shirt with collar
- Grey trousers
- Formal closed toe black shoes with white, grey or black socks.



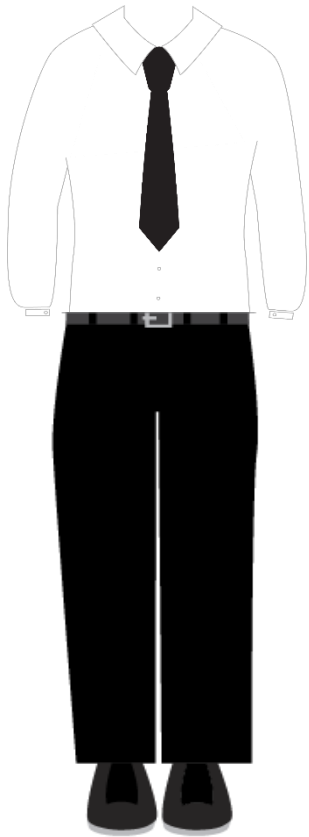
Option 2

- Regular tie, plain grey (mandatory from Grade 3)
- Standard white long or short sleeve shirt with collar
- Plain black jumper or zip cardigan with new logo
- Grey trousers
- Formal closed toe black shoes with white, grey or black socks.

Options for Post 16 Boys

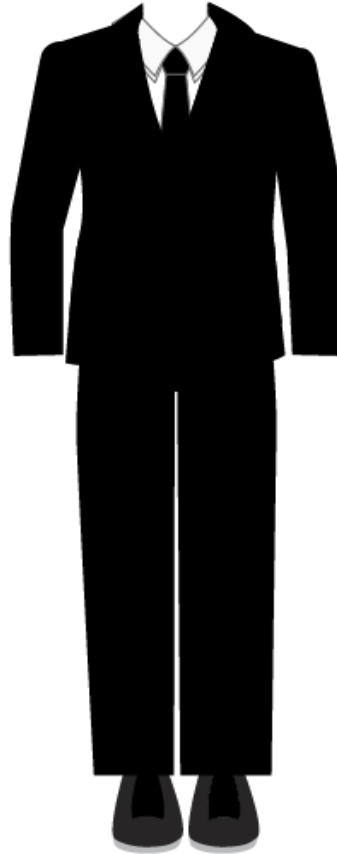
Grades 11-12

Any combination of the options below are permitted



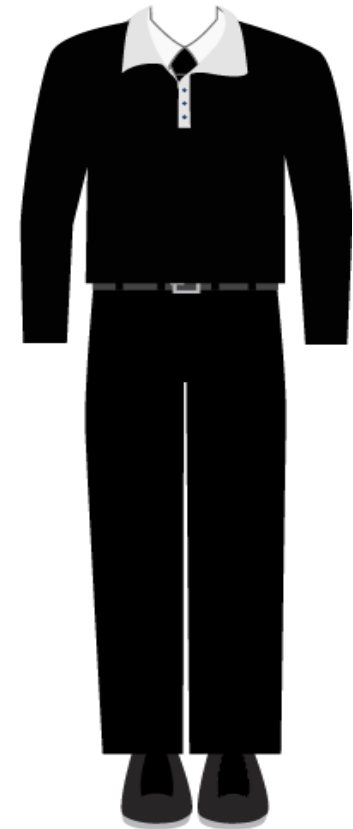
Option 1

- Conservative tie
- White formal shirt, long or short sleeve
- Black formal trousers
- Formal closed toe, black shoes



Option 2

- Conservative tie
- White formal shirt, long or short sleeve
- Black formal trousers
- Formal closed toe, black shoes
- Optional plain black blazer



Option 3

- Conservative tie
- White formal shirt, long or short sleeve
- Black formal trousers
- Formal closed toe, black shoes
- Optional plain black sweater or cardigan

Additional Items

Kindergarten 2 - CBSE Senior Grade 10



- Plain grey or khaki caps are compulsory for all CBSE Junior students to be worn during break times and outdoor PE lessons.
- Caps bearing brand logos or allegiance to clubs are not permitted.



A hijab may be worn by girls in white, grey, or black. Post 16 students may wear a plain hijab in any colour.



During winter months, students may opt to wear a plain black zip cardigan, or jumper over their shirt or blouse. This must bear the new school logo.

On health and safety grounds, students are not permitted to wear jewellery to school with the exception for girls only, of one plain stud in each ear, and a watch. Dangling earrings or rings with stones that protrude are not permitted. Other piercings such as nose or eyebrow studs are strictly forbidden. Boys are permitted to wear a watch.

Extreme hairstyles that could serve as a distraction to other students or, detract from the smart appearance of the uniform are not allowed. The definition of what is extreme will change with fashion but includes non-natural coloured hair, or, hair with patterns cut into it.

Makeup is not permitted for students in Year 11/Grade 10 and below. For Post 16 female students, light makeup may be worn.

Physical Education Lessons

Kindergarten 2 -Grade 12

Any combination of the options below are permitted



- Standard t-shirt in house colour, no school logo required
- Long sleeve or short sleeve
- Plain white t-shirt, no logo
- Plain black or white long sleeve t-shirt may be worn underneath.



Navy or black knee length shorts or, track pants.



Grey, white, or black socks and sports trainers.

Where to Buy

Parents are welcome to purchase uniform from any retailer, or tailor.



Ascot Uniforms

All items will be available for purchase from Al Waha Club each weekend and through August.

5583 6548

5047 1610